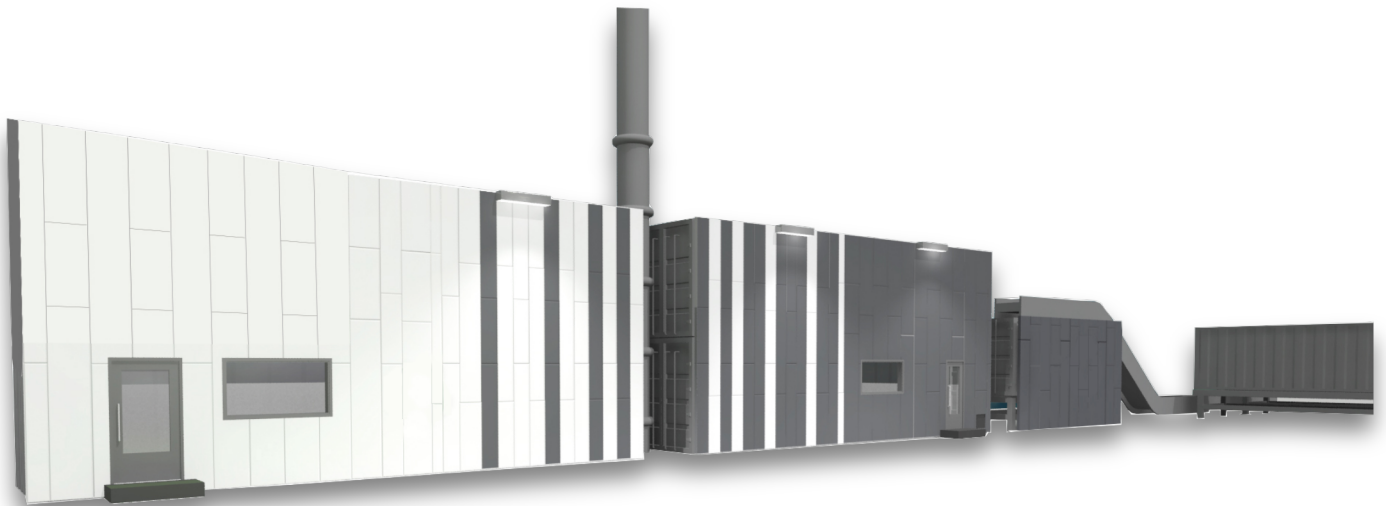


FERRO POWER

*A mobile power station operated at the source of non-recyclable waste:
ideal for utilising local energy sources.*



Local

*Local energy from various
waste components;
reduces shipping
costs.*

Clean

*When compared to oil,
natural gas or peat.*

Independent

*Improves self-sufficiency
of energy production.*

- Fast delivery
- Efficient
- Utilises many fuel types

A modular power plant built in containers for local energy production



What can be used as fuel?

By-products from industry, circular economy, agriculture and health care as well as sewage sludge and manure.

Suitable for heat production; options include cooling, steam and electricity production

Performance under optimal conditions:

- Nominal capacity 1 MW (can be duplicated)
- Heating output 8000 MWh/a
- Cooling output 4000 MWh/a
- Electricity output 750 MWh/a
- Good efficiency
- Purifies all harmful compounds, according to directives
- Fuel handling capacity 250-350 kg/h, depending on the fuel quality
- No need for a solid foundation
- Can be relocated within weeks